



THE GARTH HOMER COMMUNITY RESIDENCE

Innovative Care Housing

11.2014

INTRODUCTION

Garth Homer Community Residence

The current generation of older adults with developmental disabilities is the first ever to survive into later life. Increasingly, community living organizations are challenged to provide services to older adults experiencing functional decline and increasing health problems at a rate greater than the general population.

Ideally, older adults living with cognitive challenges should have the opportunity, as others do, to “age in place,” in the comfort and familiarity of their accustomed home and environment. But many rapidly age out of the capacity of their residential caregivers, whose services and staffing are not designed for support of the changing needs of later life. Regrettably often, because there are few alternatives providing specialized residential services for older adults with developmental disabilities, such individuals are shunted into long-term care, where they typically do not fare well.

Innovative solutions are required. The challenge is to deliver both cost efficiencies and service depth and flexibility in a small-scale congregate setting that can at the same time provide a highly individualized, intimate, and domestic residential experience.

The Garth Homer Community Residence will present new residential options for older adults with developmental disabilities, so that they can age with both dignity and choice. Designed on the principals of a “therapeutic built environment” that supports functional and cognitive maintenance for older adults, it will provide residents with a stable, secure, inclusive home in a supportive community, in which they can stay to the end of life.

INTRODUCTION

Garth Homer Community Residence

Key features of the residence include:

- Eighteen residential units on two floors, in small clusters of three units each, for people both with and without disabilities
- Units containing their own bath and toilet facilities
- Some units with kitchenettes for more independent clients
- Residential clusters equipped with their own social and dining spaces
- An open concept, hallway-free plan for residential floors with ample support and meeting space
- Integrated, ground-floor neighbourhood dementia day services, for people both with and without disabilities
- Many points of access to sky and greenery
- Possibly, integrated commercial and community services on the ground floor
- Proximity to geriatric day services at the Garth Homer Centre
- Integrated health supports
- Capacity for the delivery of palliative care
- Location within a broader inclusive, accessible neighbourhood

CONCEPTUAL ILLUSTRATION OF EXTERIOR

Garth Homer Community Residence



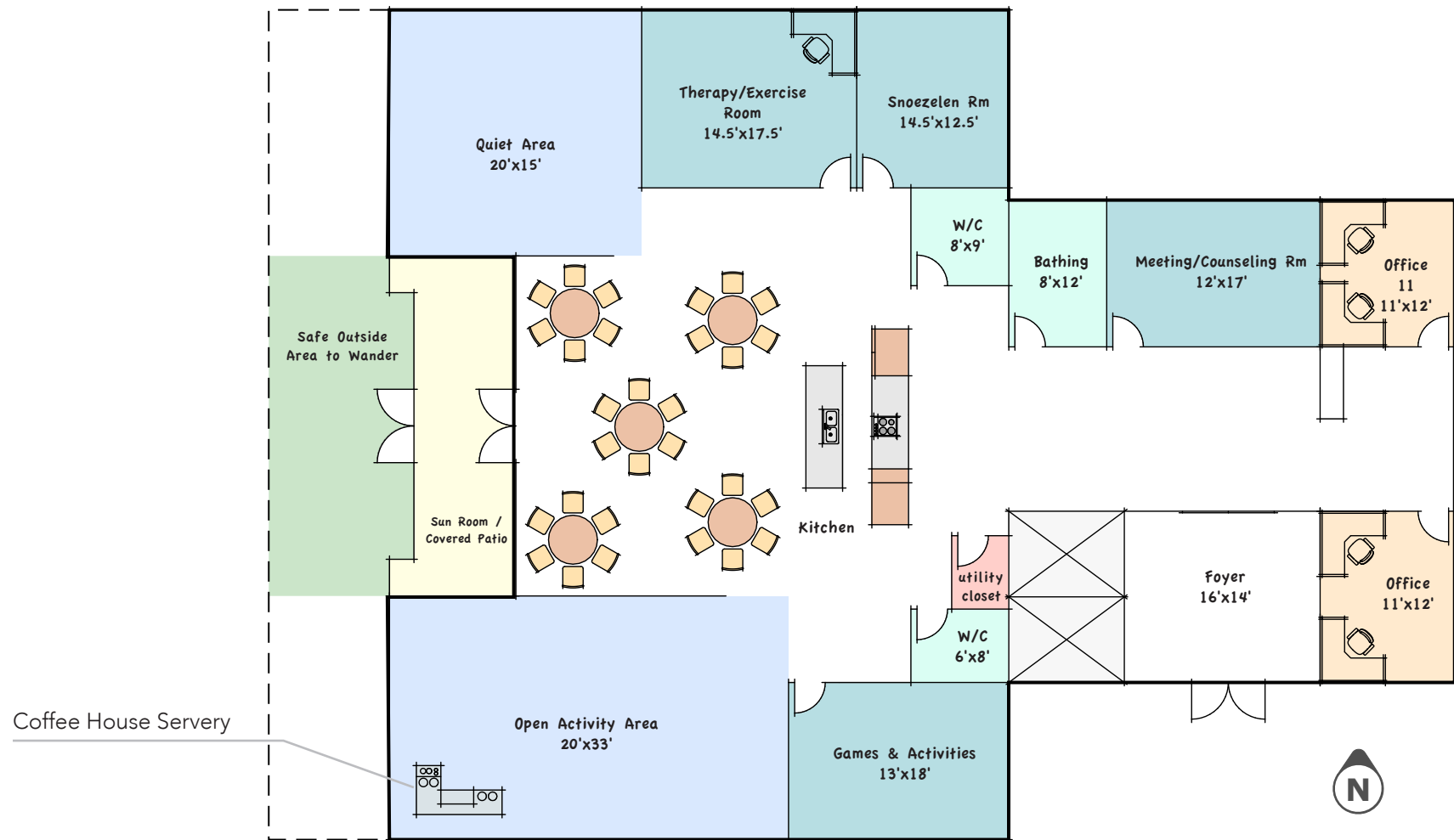
CONCEPTUAL ILLUSTRATION OF INTERIOR

Garth Homer Community Residence



FLOOR PLAN CONCEPT – FIRST FLOOR

Garth Homer Community Residence



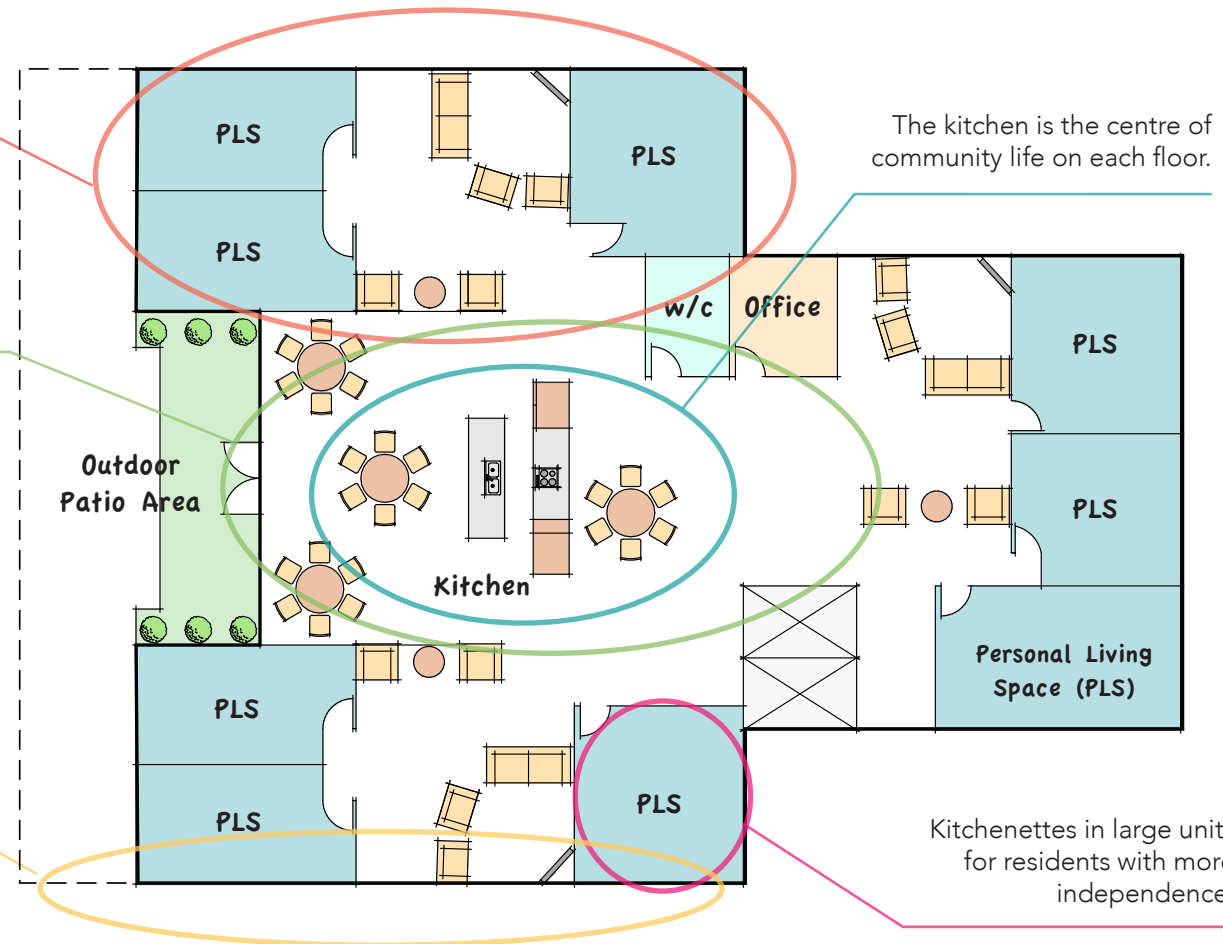
FLOOR PLAN CONCEPT – INNOVATIVE CLUSTER HOUSING

Garth Homer Community Residence

Clusters of 3 rooms with private space and more intimate common space within each cluster.

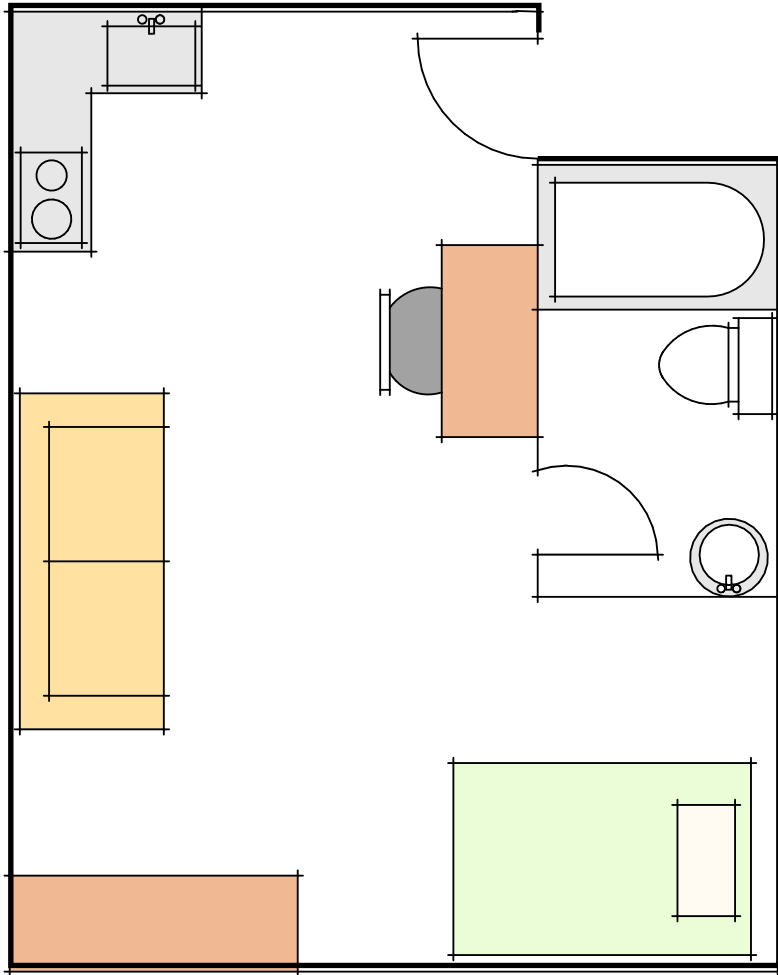
Large open areas with no hallways allow for flexibility of space and maintains unobstructed sight lines.

Each space has access to natural light and air to enhance its therapeutic environment.



PERSONAL LIVING SPACE CONCEPT

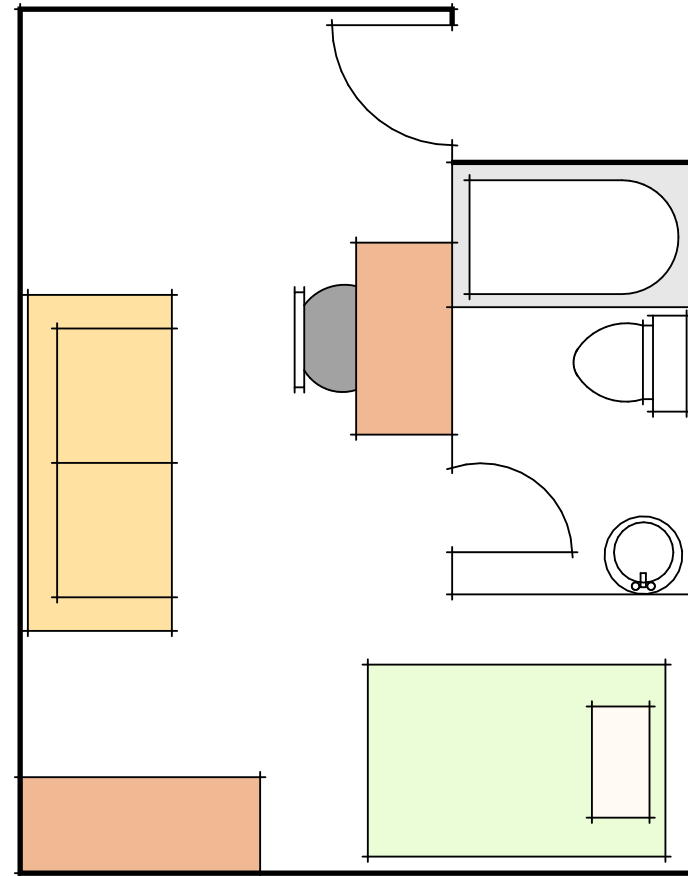
Garth Homer Community Residence



Room with Kitchenette

Conceptual Room Plan
20'x16' room shown

Scale 1:48 (1/4"=1')



Standard Room

Conceptual Room Plan
18'x14' room shown

Scale 1:48 (1/4"=1')



Garth Homer Foundation

1011 Johnson Street Victoria, BC V8V 3N6

p > 250.812.7896

www.garthhomerfoundation.org

A Life, A Home, And A Place In The World